

InfoWorkSpace 3.0 Windows Client Installation

About this guide

This Installation Guide is in Adobe Acrobat's PDF format. The free Acrobat reader is available online at: www.adobe.com.

For the convenience of navigation and finding content, we have built in a Table of Contents at the beginning of the Guide, and an Index at the end of the Guide.

In addition, later versions of Acrobat allow you to view the Table of Contents in the left panel of the Window by invoking the Adobe Bookmark feature available from the View option on the title menu, and selecting Navigation tabs, and Bookmarks from the drop down menus. Acrobat also has a search function that allows you to search for key word text strings.

Table of Contents

INFOWORKSPACE 3.0 WINDOWS CLIENT INSTALLATION	1
About this guide	1
WINDOWS CLIENT INSTALLATION	4
Recommended Hardware	4
Operating System Requirements	4
Required Components	5
InfoWorkSpace Client or Browser Plug-In	5
Optional Components.....	5
PlaceWare Conference Center.....	5
PlaceWare Conference Center Microsoft PowerPoint Add-In	6
Additional Component Options.....	6
USING THE INFOWORKSPACE CLIENT CD.....	7
Main Menu	7
Main Menu Options.....	8
InfoWorkSpace Products.....	8
Optional Components.....	8
Browse CD	8
InfoWorkSpace Guides	8
Installation Guides.....	9
Exit	9
Installing InfoWorkSpace Applications	10
InfoWorkSpace Client.....	10
LaunchPad Client	10
Browser Plug-in.....	10
CD Installation	11
Installation Steps	11
INSTALLING OPTIONAL COMPONENTS	12
Installing PlaceWare Tools.....	12
PlaceWare Media Client.....	12
PlaceWare Snapshot/Application Share Plug-in.....	12
PlaceWare PowerPoint Add-In.....	13
CD Installation of Optional Components.....	14
Installing PlaceWare Tools.....	14
PlaceWare Media Client Installation Configuration.....	14
Installing Webcam 32.....	15
UNINSTALLING INFOWORKSPACE WINDOWS COMPONENTS.....	15
Support Services	16
Education Services.....	16
Education Courses Offered.....	16
Training Centers	16
Index	17
LICENSE AGREEMENT	19
Apache Software Foundation	19
Triple-DES and SHA-1 routines.....	21

Windows Client Installation

This guide is intended to help you install the InfoWorkSpace 3.0 components on your client machine.



Windows Client installations require the installer to be logged onto the client system as the local “administrator” user.

Recommended Hardware

The following minimum hardware is recommended for the client to experience the full functionality of the InfoWorkSpace 3.0 environment:

- Pentium III 733 MHz with 1.8 GHz or better preferred
- Microphone
- Speakers (optional)
- Or Headset (preferred)
- Sound card (full duplex preferred).
- 24-bit graphics card or better (only required to eliminate color map problems with browsers and video applications)
- Video capture card and video camera (for optional video conferencing sessions)
- 50MB Free Disk Space
- 256 MB RAM (512 MB preferred)

Operating System Requirements

The InfoWorkSpace 3.0 Client for Windows requires at least one of the following operating systems:

- Microsoft Windows 2000 Professional SP4
- Microsoft Windows XP Professional SP2 (preferred)

Windows Client Installation, continued

Required Components The following software applications must be installed on each InfoWorkSpace 3.0 client:

- Web Browser

It is recommended that you use Netscape Communicator 4.73 through 4.77 or Microsoft Internet Explorer 6.0.



The web browser **MUST** be installed prior to the installation of the InfoWorkSpace Browser Plug-In or InfoWorkSpace Application software.

InfoWorkSpace Client or Browser Plug-In The InfoWorkSpace 3.0 Application for Windows includes the following:

- Client application
- LaunchPad Application
- Browser Plug-In

All of these tools are included in the InfoWorkSpace Application component installer.

Optional Components

PlaceWare Conference Center The PlaceWare Plug-ins for Windows include the following:

- PlaceWare Media Client
- PlaceWare Snapshot/AppShare Screen Capture utility
- PlaceWare PowerPoint Add-In.

All of these tools are included in the PlaceWare Plug-In component installer.

In order to use the PlaceWare Conference Center, the following components are recommended:

- PlaceWare Media Client
- PlaceWare Snapshot/Application Share Plug-In

Optional Components, continued

PlaceWare Conference Center Microsoft PowerPoint Add-In For publishing Microsoft PowerPoint presentations to the PlaceWare Conference Center, the following additional components are recommended:

- Microsoft PowerPoint
- PlaceWare PowerPoint Add-In (PowerPoint export utility allows presentations to be viewed in InfoWorkSpace)

Additional Component Options The following components add additional functionality of the InfoWorkSpace 3.0 client:

- Personal Webcam

Used for personal video

- Adobe Acrobat Reader

Needed to view online documentation

- Microsoft Office

Used for viewing documents in File Cabinet, Briefcase, and Document Library in their native format.

Using the InfoWorkSpace Client CD



When installing components from the InfoWorkSpace 3.0 Client CD, insert the CD into the first CDROM drive recognized by your system.

Main Menu

Main Menu Displays

The Main Menu button brings you back to the main window of the InfoWorkSpace 3.0 Client CD.

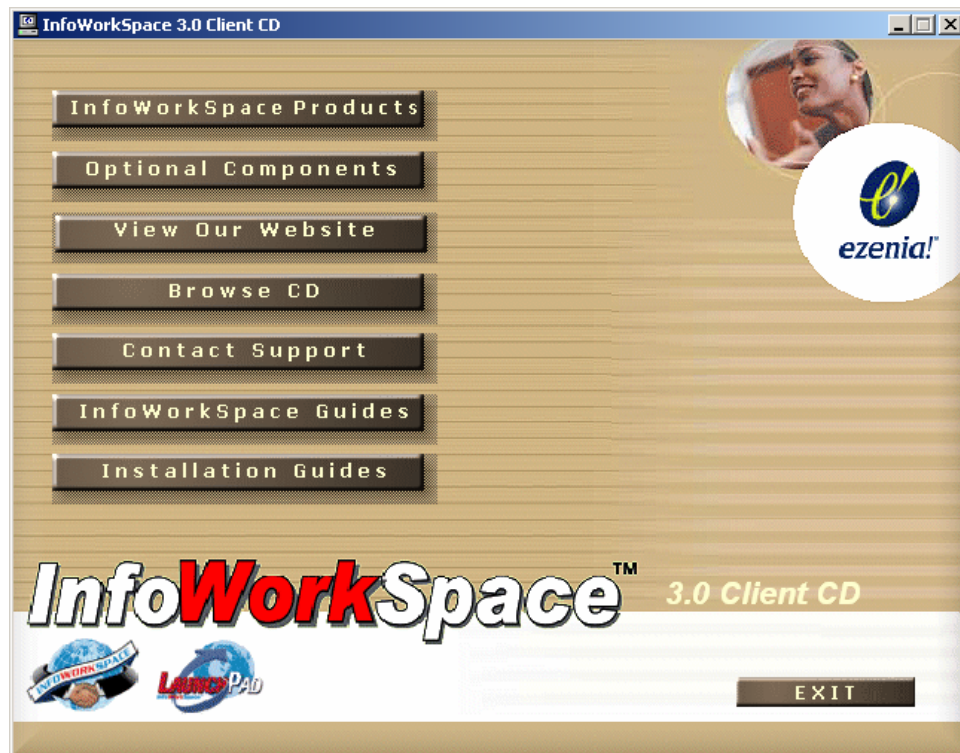


Figure 1 InfoWorkSpace 3.0 Client CD

Main Menu Options

The Main Menu has the following components available:

InfoWorkSpace Products The InfoWorkSpace Products button displays the InfoWorkSpace 3.0 installer. The InfoWorkSpace 3.0 Client for Windows includes the following:

- InfoWorkSpace Client application
- LaunchPad Application
- Browser Plug-In.

These tools are included in the InfoWorkSpace Client 3.0 component installer.

Optional Components The Optional Components button lists the available support installers. The Optional Components include the following:

- PlaceWare Plug-in (usually installed)
- Netscape browser
- Adobe Acrobat reader
- Pseudo Webcam

Mouse over the top of each button for a brief description of each component installer.

Browse CD The Browse CD button on the InfoWorkSpace 3.0 Client CD provides you with a way to browse the contents of the CD.

InfoWorkSpace Guides The following InfoWorkSpace Guides are now available online through Service and Support at www.ezenia.com:

- LaunchPad User's Guide
- User's Guide
- Administrator's Guide

Available through the Ezenia website: www.ezenia.com.

These guides are in PDF, and require the Adobe Acrobat Reader, that is available free at: www.adobe.com.

Installation Guides The following InfoWorkSpace Guides are now available online through Service and Support at www.ezenia.com:

Client Installation Guide

- Windows Server Install
- Solaris Server Install

These guides are in PDF, and require the Adobe Acrobat Reader, that is available free at: www.adobe.com.

Exit Exits the InfoWorkSpace 3.0 Client CD window.



Java Plug-In

Java Plug-In 1.4.2_10 is provided, if not already available, on the client machine, to work with the InfoWorkSpace 3.0 Browser client. The Java Plug-In assigns itself as the default JRE in Internet Explorer. When this happens, you cannot upload documents to Conference Center. If you want this capability, in Internet Explorer, select Tools\Options\Advanced. Deselect the option to use 1.4.2_10 for <applet> tags.

IIS and HTTPS Tunneling

If you are using IIS with HTTPS Tunneling, Conference Center in Internet Explorer shows all attendees as “unknown” in the Chat Panel\Attendees list when using the 1.4.2_10 Java plug-In. To correct this issue, in Internet Explorer, select Tools\Internet Options\Advanced and uncheck the "Use HTTP 1.1" setting. You may refer to the InfoWorkSpace Administrator's Guide for more details.

Installing InfoWorkSpace Applications

The InfoWorkSpace 3.0 Client for Windows includes the Client application., the LaunchPad .application, and the Browser Plug-in. All of these tools are included in the InfoWorkSpace Client 3.0 component installer.



The InfoWorkSpace 3.0 Client application installer will remove any previously installed InfoWorkSpace Client applications.

InfoWorkSpace Client The InfoWorkSpace 3.0 client is the local Java application version of InfoWorkSpace, and is for use by those who desire a local application. It is recommended, when browser-only access is desired, or when using the LaunchPad without connecting to InfoWorkSpace.

LaunchPad Client The LaunchPad Client is a local java application version of the InfoWorkSpace Instant Messaging client. Although LaunchPad can be accessed from a browser, the LaunchPad Client is the preferred access method for instant messaging. This component must be installed when access to LaunchPad from a local client is required.

Browser Plug-in You do not have to install the InfoWorkSpace client or LaunchPad client applications for standard InfoWorkSpace operations. You can use a browser and the InfoWorkSpace Browser Plugin to connect the browser to InfoWorkSpace or the PlaceWare Conference Center. .The operations will be slower however, especially on low bandwidth connections.

CD Installation

Installation Steps

To install the InfoWorkSpace Client applications from the CD:

1. Insert the InfoWorkSpace Version 3.0 Client CD in the CD-ROM drive. The InfoWorkSpace Client CD auto-starts.
2. Click InfoWorkSpace Products. The InfoWorkSpace Products window displays.
3. Click InfoWorkSpace Client 3.0. The InstallShield Wizard displays.

An Initializing wizard window displays. This may take some time to display depending on your system.

4. After the Welcome InstallShield Wizard for InfoWorkSpace window displays, click Next to continue.
5. The InfoWorkSpace Software License Agreement displays. You need to accept the terms of the agreement to continue the install. Select I accept the terms in the license agreement and click Next.
6. A Directory Name window displays. Click Next to accept the default installation path for InfoWorkSpace or browse to an alternate installation directory.
7. The Installation Type window displays. Typical installs the InfoWorkSpace Client application, the LaunchPad application and the Browser Plug-in. Accept the default and click Next to install all three applications.
8. Select Custom and choose only those application(s) you want installed, if you do not want to install a component by clicking Features to uncheck all three components; then select the component(s) you wish to install and then click Next to continue.
9. A summary information window displays. Click Install to continue.
10. When the installation is complete, the InstallShield Wizard Completed window displays. Click Finish.



If a Java Web Start shortcut displays on the client machine's desktop, you can remove it if you desire.

Installing Optional Components

These components can be installed in any order as long as a browser has been installed first.

- From the Main Menu select Optional Components
- Select 'Get PlaceWare Plugins'
- Follow Prompts

Installing PlaceWare Tools

The PlaceWare tools include the PlaceWare Media client, the PlaceWare Snapshot/AppShare Screen capture utility, and the PlaceWare PowerPoint Add-In. All of these tools are included in the PlaceWare Plug-in component installer.

PlaceWare Media Client PlaceWare Media client supports all Conference Center audio functionality. Installation of this component is recommended for all users of the PlaceWare Conference Center.

Since modifications have been made to the PlaceWare installation package to support operation from the Sun Java 2 Plug-in, this component is now installed through the PlaceWare installer.

PlaceWare Snapshot/Application Share Plug-in You do not have to install the PlaceWare Plug-in for standard InfoWorkSpace operations. If you would like the Conference Center Live Demo capability, this Plug-in and the Conference Center screen capture utility are necessary.

The PlaceWare Snapshot/Application Share Plug-in supports all Conference Center screen capture and screen broadcast functionality. In the PlaceWare Conference Center, Snapshot is used to capture images from a user's screen and places them on a Conference Center slide, and AppShare is used to broadcast the contents of a user's screen in real-time to all participants of a Conference Center event. Installation of this component is not required for users of the PlaceWare Conference Center, but it is required for Conference Center presenters.

Since modifications have been made to the PlaceWare installation package to support operation from the Sun Java 2 Plug-in, this component is now installed through the PlaceWare installer.

**PlaceWare
PowerPoint
Add-In**

The PlaceWare PowerPoint Add-In supports the conversion of Microsoft PowerPoint 97/2000/XP files to the format used by the PlaceWare Conference Center. This component is only provided for users of Windows operating systems and must be installed after the installation of PowerPoint. With the release of the PlaceWare Conference Center 3.6, PowerPoint files can be automatically converted into a viewable slide show on the InfoWorkSpace server, eliminating the need for the installation component. However, there are several features that the PowerPoint Add-In provides that cannot be achieved elsewhere. For example, the synchronization of presentation notes along with side content is only possible from the PowerPoint Add-In; therefore the installation of this component is optional.

Although no modifications have been made to the PlaceWare installation package, this component is now installed through the PlaceWare installer.

CD Installation of Optional Components

These components can be installed in any order as long as a browser has been installed first.

Installing PlaceWare Tools

The PlaceWare tools are installed from the InfoWorkSpace Version 3.0 Client CD, and include the following:

- PlaceWare Media Client

The PlaceWare Media Client supports all Conference Center audio functionality. Installation is recommended for all users of the PlaceWare Conference Center.

- PlaceWare Snapshot/AppShare Screen Capture Utility

You do not have to install the PlaceWare Plug-In for standard InfoWorkSpace operations. It is required for the Conference Center Live Demo capability and for using the Conference Center Screen Capture utility. The PlaceWare Snapshot/Application Share Plug-In supports all Conference Center Screen Capture and Screen Broadcast functionality. In the PlaceWare Conference Center, Snapshot is used to capture images from a user's screen and places them on a Conference Center slide, and AppShare is used to broadcast the contents of a user's screen in real-time to all participants of a Conference Center event. Installation of this component is not required for users of the PlaceWare Conference Center, but is required for Conference Center presenters.

- PlaceWare PowerPoint Add-In.

The PlaceWare PowerPoint Add-In supports the conversion of Microsoft PowerPoint 97/2000/XP files to the format used by the PlaceWare Conference Center. This component is only provided for users of Windows operating systems and must be installed after the installation of PowerPoint. With the release of PlaceWare Conference Center 3.6, PowerPoint files can be automatically converted into a viewable slide show on the InfoWorkSpace server, eliminating the need for the installation component.

Though the installation of this component is optional, there are several features that the PowerPoint Add-In provides that are not available elsewhere. For example, the synchronization of presentation notes along with "side" content is only available from the PowerPoint Add-In.

Skip any features you do not want installed.

Installing Optional Components, continued

PlaceWare Media Client Installation

PlaceWare Media Client has several component options that can be attuned for your environment during the installation process, including:

Configuration

- Browser detection
- Network Bandwidth Configuration
- Speaker Adjustment options
- Record Level Adjustment for microphone audio input

Installing Webcam 32

The Personal Webcam component allows a user to convert a video camera connected to the user's client machine into a web camera. This component is not needed to support dedicated web camera devices such as the Axis WebCam.

InfoWorkSpace currently only supports web camera devices in the InfoWorkSpace room video component. Real-time video can be achieved from an External VTC package (Microsoft NetMeeting, Sun SunForum, or Sorenson Envision). Installation of this component is optional.

Uninstalling InfoWorkSpace Windows Components

Executing the InfoWorkSpace 3.0 Client application installer will remove any previously installed InfoWorkSpace Client applications and then install the InfoWorkSpace 3.0 Client version.

In order to manually uninstall previous versions of IWS, refer to the expanded Client install guide or your IWS 3.0 Client CD.

Support Services

Ezenia! is 100-percent committed to ensuring the success of its customers. Our best-in-class service solutions continue to evolve to provide OEMs, corporate customers and third-party service providers with new levels of service in all phases, from planning and development to integration and implementation to training and support. InfoWorkSpace technical support can be reached at: 866-269-0532.

Education Services

Education Courses Offered

Educational Services provides technical training on Ezenia!'s products and supporting technologies.

- InfoWorkSpace - Basic Users Course
Time is money! This course ensures attendees full employment of the InfoWorkSpace Client and/or LaunchPad relative to each environment.
- InfoWorkSpace - Basic Administrators Course
Save time on the learning curve! Learn essential administration requirements to fully utilize InfoWorkSpace.

Training Centers

The Ezenia! InfoWorkSpace Training Center now has two locations:

- Our Colorado Springs, CO location
- Our newest training facility at our Corporate Office in Nashua, NH.

Our experienced technical instructors teach using a mix of lecture, discussion, and intensive hands-on sessions. Class size is limited to ensure instructor attention. For more information, please feel free to contact us at: training@infoworkspace.com.

On-Site Training

On-Site Training brings our courses to your location for groups of up to 10 students. This option enables rapid deployment of technology and helps you make the most of your training investment. Contact sales@ezenia.com for more information.

Index

	A		Client Application for Windows	4, 10
			Webcam for Windows	15
Administrator		4	Instant Messaging	10
Adobe Acrobat Reader		6, 8, 9	Internet Explorer	5
	B			J
Browse CD		8	Java Plugin	9, 12
Browser		See Web Browser		L
Browser Plugin		5, 8, 10		
	C		LaunchPad	5, 8, 10
Client Application		5, 8, 10, 11	installing	10
Client CD		7	License Agreement	
Windows		7-9, 11, 14	Ezenia!	11
color map problems		4		M
	D		Main Menu	7
default installation path			Manuals	6, 8, 9
InfoWorkSpace		11	Media Client	See PlaceWare Media Client
default JRE		9	Microphone	4
disk space			gain	14
Windows		4	Microsoft Internet Explorer	5
documentation		6, See also Manuals	Microsoft NetMeeting	15
	E		Microsoft Office	6
Exit		9	Microsoft PowerPoint	6, 13, 14
External VTC		15	Microsoft Windows 2000 SP 4	4
	G		Microsoft Windows XP SP 2	4
graphics card		4		N
Guides		6, 9, See also Manuals, See also Manuals	Netscape Communicator	5, 14
	H		Network Bandwidth Configuration, and PlaceWare Media Client	14
hardware				O
Windows		4	online documents	8, 9
	I		Operating System Requirements	4
InfoWorkSpace			Optional Components	8
installing		10	Windows	5, 12
InfoWorkSpace Client CD		See Client CD		P
InfoWorkSpace Instant Messaging		See Instant Messaging	PDF	8, 9
InfoWorkSpace Products		See Products	Personal Webcam	See Webcam
installation type			PlaceWare Conference Center	5, 10, 12, 13, 14
Custom		11	PlaceWare Media Client	See PlaceWare Media Plug-In
Typical		11	PlaceWare Media Client, and Network Bandwidth Configuration	14
installing			PlaceWare Media Plug-In	5, 12, 14
			PlaceWare Plugins	12, 14
			PlaceWare PowerPoint Add-In	6, 13

InfoWorkSpace 3.0 Windows Client Installation

PlaceWare Snapshot Plug-In	5, 12	sound card	4
PlaceWare Tools	12, 14	speakers	4
PowerPoint Add-In <i>See</i> PlaceWare PowerPoint Add-In, <i>See</i> PlaceWare PowerPoint Add-In		Sun SunForum	15
Products	8, 11		
		U	
		Uninstalling Windows	15
		V	
RAM			
Windows	4		
Recommended Hardware			
Windows	4	video camera	4, 15
Recommended Software		video capture card	4
Windows	5	video component	15
Required Software		video conferencing	4
Windows	5		
		W	
		Web Browser	5, 10, 12, 14
Software		Webcam	6
Recommended	5	installing	15
Required	5	Windows Client Installation	4
Software License Agreement	11		
Sorenson Envision	15		

License Agreement

Ezenia Inc. (Ezenia!) and its licensors retain all ownership rights to the software provided by Ezenia! (“Software”) and related documentation.

Use of the Software and related documentation is governed by the license agreement accompanying the software and applicable copyright law. Your right to copy this documentation is limited by copyright law and by the license agreement accompanying the Software. Making unauthorized copies, adaptations, or compilation works is prohibited and constitutes a punishable violation of the law. Ezenia! may revise this documentation from time to time without notice.

Ezenia! is a registered trademarks of Ezenia Inc . InfoWorkSpace and LaunchPad are trademarks of Ezenia! Inc.

Many of the designations used by manufactures and sellers to distinguish their products are claimed as trademarks or registered trademarks. The designations have been appropriately capitalized if Ezenia! is aware of that trademark.

Adobe Systems Incorporated

Adobe and Acrobat are registered trademarks of Adobe Systems Incorporated.

Apache Software Foundation

Version 3.0

Copyright 1997-2006 Ezenia! Inc. All rights reserved.

Copyright (c) 2000 The Apache Software Foundation. All rights reserved.

This product includes software developed by the Apache Software Foundation (<http://www.apache.org/>).

This software is provided “as is” and any expressed or implied warranties, including, but not limited to, the implied warranties of merchantability and fitness for a particular purpose are disclaimed. In no event shall the apache software foundation or its contributors be liable for any direct, indirect, incidental, special, exemplary, or consequential damages (including, but not limited to, procurement or substitute goods or services; loss of use, data, or profits; or business interruption) however caused and on any theory of liability, whether in contract, strict liability, or tort (including negligence or otherwise) arising in any way out of the use of this software, even if advised of the possibility of such damage.

Copyright (c) 1999 Carnegie Mellon University (CMU).

All rights reserved.

Permission to use this software and its documentation for any purpose and without fee is hereby granted, provided that the above copyright notice appear and that both that copyright notice and this permission notice appear in supporting documentation, and that the name of CMU not be used in advertising or publicity pertaining to distribution of the software without specific, written prior permission.

CMU disclaims all warranties with regard to this software, including all implied warranties of merchantability and fitness. In no event shall CMU be liable for any special, indirect or consequential damages or any damages whatsoever resulting from loss of use, data or profits, whether in an action of contract, negligence or other tort action, arising out of, or in connection with the use or performance of this software.

Netscape DB KeyStore Research Edition 1.0 (NDBS) Copyright © 1999 Carnegie Mellon University. All rights reserved.

The **Jakarta Project** and **Jakarta Tomcat** are the intellectual property of Apache Software Foundation, copyright 1999-2001.

DBM version 1.85

Copyright (c) 1991, 1993

The Regents of the University of California. All rights reserved.

Redistribution and use in source and binary forms, with or without modification, are permitted, provided that the following conditions are met:

1. Redistribution of source code must retain the above copyright notice, this list of conditions and the following disclaimer.
2. Redistribution in binary form must reproduce the above copyright notice, this list of conditions and the following disclaimer in the documentation and/or other materials provided with the distribution.
3. All advertising materials mentioning features or use of this software must display the following acknowledgement:

This product includes software developed by the University of California, Berkeley and its contributors.

4. Neither the name of the University nor the names of its contributors may be used to endorse or promote products derived from this software without specific prior written permission.

This software is provided by the regents and contributors “as is” and any express or implied warranties, including, but not limited to, the implied warranties of merchantability and fitness for a particular purpose are disclaimed. In no event shall the regents or contributors be liable for any direct, indirect, incidental, special, exemplary, or consequential damages, (including, but not limited to, procurement or substitute goods or services; loss of use, data, or profits; or business interruption) however caused and on any theory of liability, whether in contract, strict liability, or tort (including negligence or otherwise) arising in any way out of the use of this software, even if advised of the possibility of such damage.

DemoShield and InstallShield

DemoShield and InstallShield are service marks and registered trademarks of InstallShield Software Corporation in the United States and/or other countries.

Intel Corporation

Intel and Pentium and trademarks or registered trademarks of Intel Corporation or its subsidiaries in the United States or other countries.

Legato Systems, Inc.

NetWorker is a trademark of Legato Systems, Inc.

Lotus Development Corporation

Lotus, Sametime Connect, Sametime and related logos are registered trademarks of Lotus Development Corporation.

Macromedia, Inc.

Macromedia and Flash are trademarks or registered trademarks of Macromedia, Inc. in the United States and/or other countries.

Micron Technology Inc.

Raptor is a trademark of Micron Technology Inc., its subsidiaries (collectively Micron), or others.

Microsoft Corporation

Active Directory and Active Client are trademarks and Microsoft, MS-DOS, Microsoft Internet Explorer logo, NetMeeting, Outlook, PowerPoint, Windows, and Windows NT are registered trademarks of Microsoft Corporation in the United States and/or other countries.

Netscape Communications Corporation

Netscape, Netscape Communicator, Netscape Calendar Server, Netscape Mail Server, Netscape Directory Server, Netscape Certificate Management Server, and Netscape logos are registered trademarks of Netscape Communications Corporation.

Oracle Corporation

Oracle, Oracle9i, Internet File System (iFS), and related logos are trademarks or registered trademarks of Oracle Corporation.

PlaceWare

PlaceWare, LiveDemo, SnapShot, and PlaceWare logos are registered trademarks of PlaceWare.

RealNetworks, Inc.

Real Audio is the registered trademark of RealNetworks, Inc.

Sun Microsystems Inc.

Solaris, Java, Java Plug-in, JavaHelp, and related logos are trademarks or registered trademarks of Sun Microsystems Inc.

SPARCStation and all SPARC trademarks are used under license and are trademarks or registered trademarks of SPARC International, Inc. in the United States and other countries. Products bearing SPARC trademarks are based upon an architecture developed by Sun Microsystems, Inc.

Sun-Netscape Alliance

iPlanet Web Server is a registered trademark of Sun-Netscape Alliance.

Surveyor Corporation

Webcam 32 is a trademark of Surveyor Corporation.

Triple-DES and SHA-1 routines

by Eric Young Triple-DES and SHA-1 routines by Eric Young (ey@cryptsoft.com)

Copyright (c) 1995-1997 Eric Young (ey@cryptsoft.com)

All rights reserved.

This package is a DES implementation written by Eric Young (ey@cryptsoft.com). The implementation was written to conform with MIT's libdes. This library is free for commercial and non-commercial use as long as the following conditions are adhered to. The following conditions apply to all code found in this distribution.

Copyright remains Eric Young's, as such any copyright notices in the code are not to be removed. If this package is used in a product, Eric Young should be given attribution as the author of that the SSL library. This can be in the form of a textual message at program startup or in documentation (online or textual) provided with the package.

Redistribution and use in source and binary forms, with or without modification, are permitted, provided that the following conditions are met:

1. Redistribution of source code must retain the copyright notice, this list of conditions and the following disclaimer.
2. Redistribution in binary form must reproduce the above copyright notice, this list of conditions and the following disclaimer in the documentation and/or other materials provided with the distribution.
3. All advertising materials mentioning features or use of this software must display the following acknowledgement: This product includes software developed by Eric Young (ey@cryptsoft.com).

This software is provided by Eric Young "as is" and any express or implied warranties, including, but not limited to, implied warranties of merchantability and fitness for a particular purpose are disclaimed, in no event shall the author or contributors be liable for direct, indirect, incidental, special, exemplary, or consequential damages (including, but not limited to, procurement of substitute goods or services; loss of use, data, or profits; or business interruption) however caused and on any theory of liability, whether in contract, strict liability, or tort (including negligence or otherwise) arising in any way out of the use of this software, even if advised of the possibility of such damage.

The license and distribution terms for any publicly available version or derivative of this code cannot be changed, i.e. this code cannot simply be copied and put under another distribution license [including the GNU Public License.] The reason for this direct statement is past experience of having the code simply copied and the attribution removed from it, and then distributed as part of other packages. This implementation was a non-trivial and unpaid effort. Triple-DES and HMAC routines by Tim Hudson (tjh@cryptsoft.com).

Copyright (C) 1995-1998 Eric Young (ey@cryptsoft.com)

All rights reserved.

This package is an SSL implementation written by Eric Young (ey@cryptsoft.com). The implementation was written to conform with Netscape's SSL.

This library is free for commercial and non-commercial use as long as the following conditions are adhered to. The following conditions apply to all code found in this distribution, be it the RC4, RSA, lhash, DES, etc, code; not just the SSL code. The SSL documentation included with this distribution is covered by the same copyright terms except that the holder is Tim Hudson (tjh@cryptsoft.com).

Copyright remains Eric Young's, and as such any Copyright notices in the code are not to be removed. If this package is used in a product, Eric Young should be given attribution as the author of the parts of the library used. This can be in the form of a textual message at program startup or in documentation (online or textual) provided with the package.

Redistribution and use in source and binary forms, with or without modification, are permitted provided that the following conditions are met:

1. Redistribution of source code must retain the copyright notice, this list of conditions and the following disclaimer.
2. Redistribution in binary form must reproduce the above copyright notice, this list of conditions and the following disclaimer in the documentation and/or other materials provided with the distribution.
3. All advertising material mentioning features or use of this software must display the following acknowledgement: “This product includes cryptographic software written by Eric Young (eay@cryptsoft.com)” The word ‘cryptographic’ can be left out if the routines from the library being used are not cryptographic related.
4. If you include any Windows specific code (or a derivative thereof) from the apps directory (application code) you must include an acknowledgement: “This product includes software written by Tim Hudson (tjh@cryptsoft.com).”

This software is provided by Eric Young “as is” and any express or implied warranties, including, but not limited to, the implied warranties of merchantability and fitness for a particular purpose are disclaimed. In no event shall the author or contributors be liable for any direct, indirect, incidental, special exemplary, or consequential damages (including, but not limited to, procurement of substitute goods or services; loss of use, data, or profits; or business interruption) however caused and on any theory of liability, whether in contract, strict liability, or tort (including negligence or otherwise) arising in any way out of the use of this software, even if advised of the possibility of such damage.

The license and distribution terms for any publicly available version or derivative of this code cannot be changed, i.e. this code cannot simply be copied and put under another distribution license [including the GNU Public License.]

X/Open Company, Ltd

UNIX is a trademark registered in the United States and other countries, licensed exclusively through X/Open Company, Ltd.

All other product, brand names, and logos are trademarks or registered trademarks of their respective owners.